

Proudly Made in
the U.S.A.

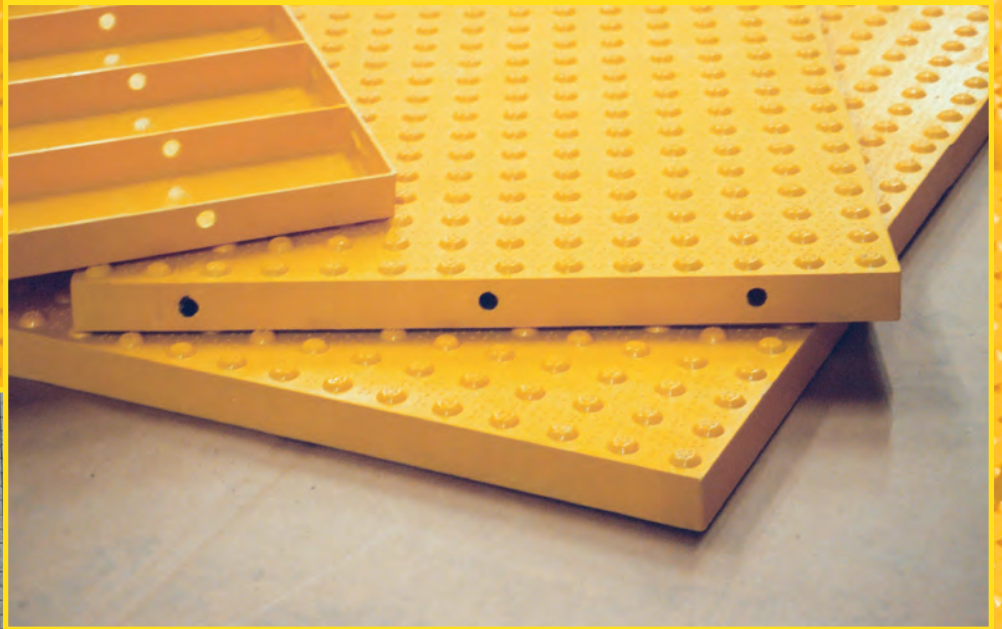
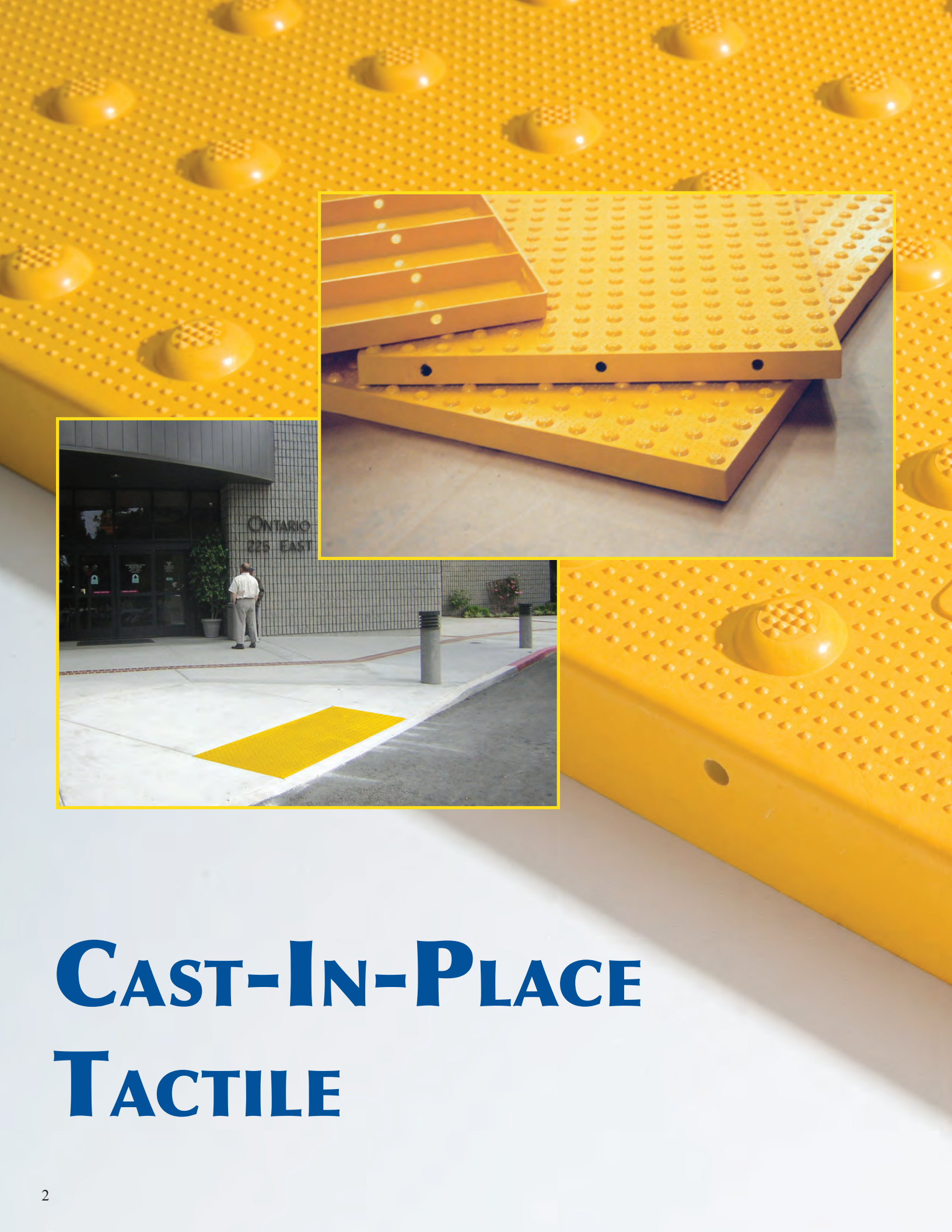


ADA SOLUTIONS, INC.
DETECTABLE WARNING SURFACES
FOR PEDESTRIAN CROSSINGS

CAST-IN-PLACE TACTILE



Service, Delivery and Price
Make ADA Solutions, Inc. the Obvious Choice



CAST-IN-PLACE TACTILE

*Proudly Made in
the U.S.A.*



ADA SOLUTIONS INC
www.ADATILE.com



CAST-IN-PLACE TACTILE

Installation Procedure

Be sure to read and understand all of these instructions before you begin.

A. The physical characteristics of the concrete shall be as specified in the contract documents while maintaining a slump range of 4-7 to permit the solid placement of the Tactile Unit in the wet cement.

B. The concrete shall be poured and finished level, true and smooth to the required dimensions prior to the placement of the Tactile Unit.

C. Place the Tactile Unit 6-8 inches from the curb line. Working in a grid pattern, tamp the Tactile Unit into the wet concrete using a rubber mallet and a piece of wood. Continue this process until all of the air has been released, and the Tactile Unit surface is flush with the surrounding area. **IMPORTANT: Avoid striking the surface of the Tactile Unit directly.**

D. Following the placement, the Tactile Unit elevation should be checked to the adjacent surface with a straight edge. The Tactile Unit elevation should be consistent with the contract drawings and specifications. Any required adjustments must be made prior to the time when the concrete begins to set.

E. **IMPORTANT NOTICE TO INSTALLER:** *To allow for expansion and contraction, after tile is installed, use a 1/4" finish edge trowel around entire perimeter. On a continuous run, be sure to space each unit 1/8" apart.*

F. When you are confident that the Tactile Unit is in place, and no further adjustments are needed, place a cinder block on both ends to hold the Tactile Unit in place while the concrete sets.

G. During and after the Tactile Unit installation, as well as the concrete curing stage, no walking or external forces can be placed on the Tactile Unit. The area must be protected from pedestrian traffic until concrete is cured. The Tactile Warning Surface will be ready for pedestrian traffic within 2-4 hours.

H. Be sure to remove plastic protective covering from the face of the Tactile Unit once the concrete is cured.



PRODUCT SIZES
2'x3' 2'x4' 2'x5'
3'x4' 3'x5'

APPLICATION
Fresh Pour
Concrete
Ramps

**View additional photos, drawings and specifications on our website:
www.adatile.com. Call (800) 372-0519 with any questions.**

CAST-IN-PLACE TACTILE

Inline Dome Pattern

DOME GEOMETRY

In accordance with ADA Regulations for Detectable Warning on Curb Ramps: Raised truncated domes with a diameter of nominal 0.9", a height of nominal 0.2", and a center-to-center spacing of 1.67" minimum, and 2.35" maximum.

PANEL DIMENSIONS

Tactile Units are available in 2'x3', 2'x4', 2'x5', 3'x4' and 3'x5' sizes. Tactile Units may also be custom configured to accommodate specific project requirements. Tactile Units measure 0.25" nominal thickness and feature embedment ribs at 3" on center.

MATERIAL

A homogenous glass and carbon reinforced composite which is colorfast and UV stable. Truncated domes are fiberglass reinforced for enhanced durability. The color of the Tactile Unit is uniform throughout and does not rely on any type of paint coating to achieve color stability. Standard colors include: Federal Yellow, Brick Red, Clay Red, Safety Red, Blue, Dark Gray and Black.

INSTALLATION

Tactile Units are to be used on new curb ramp locations. The Tactile Units can be pre-filled with concrete and set in place or pressed into place in the freshly poured concrete.



PHYSICAL CHARACTERISTICS

Compressive Strength	28,900 psi	ASTM D 695
Flexural Strength	29,300 psi	ASTM D 790
Water Absorption	.07%	ASTM D 570
Slip Resistance	1.18 Dry, 1.05 Wet	ASTM C 1028
Flame Spread Index	20	ASTM E 84
Salt Spray	No Change (200 hours)	ASTM B 117
Chemical Stain Testing	No Deterioration	ASTM 1308
Abrasion Resistance	549	ASTM C 501
Accelerated Weathering	Delta E<5.0 (2,000 hours)	ASTM G 155
Tensile Strength	11,600 psi	ASTM D 638
Load Bearing at 16,000 lbs.	No Damage	AASHTO-H20
Freeze/Thaw/Heat	No Disintegration	ASTM C 1026

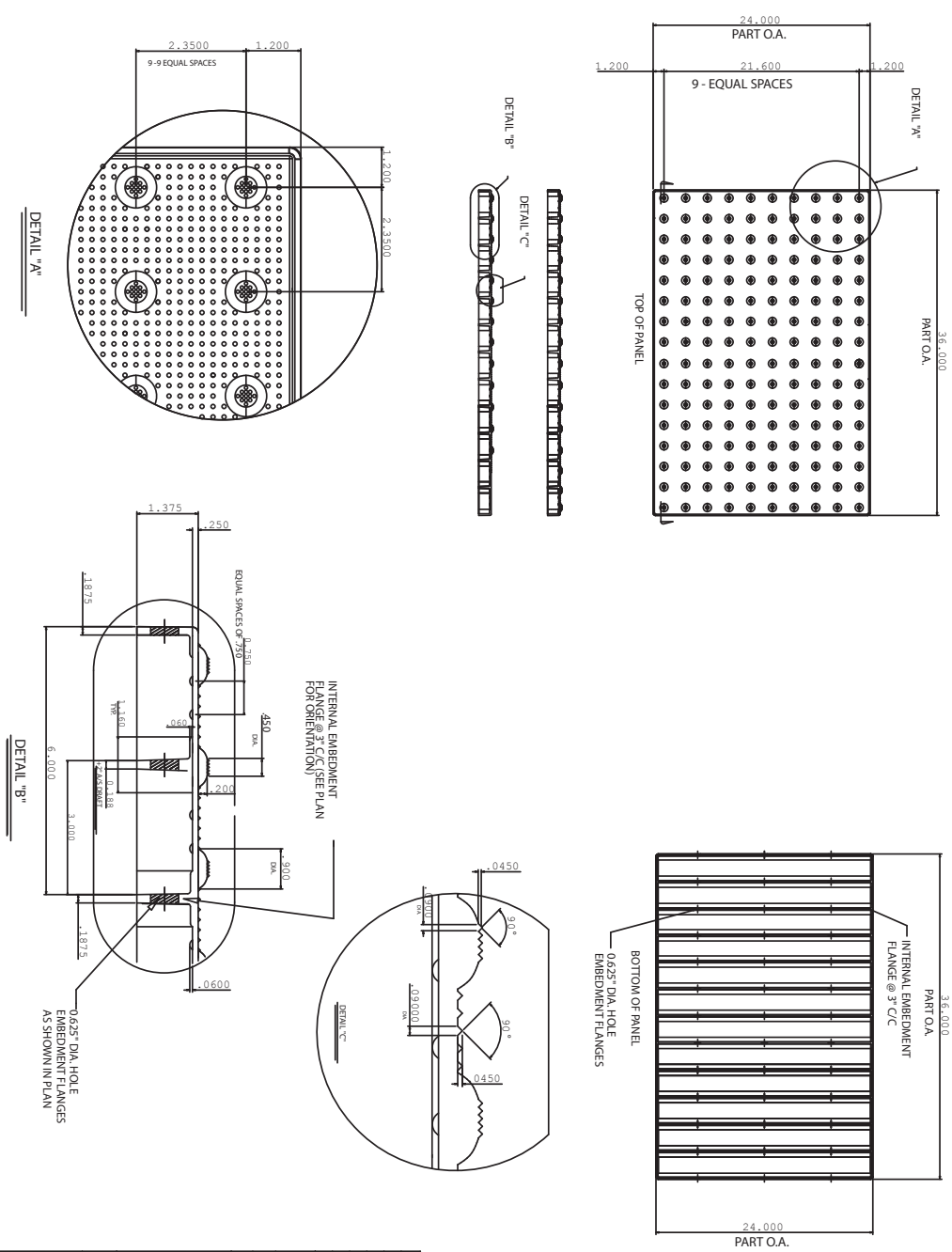


Color
Throughout

5-Year
Warranty

CAST-IN-PLACE TACTILE

24"x36" Tile
2.35" Dome Spacing



WWW.ADATILE.COM

TITLE	DESCRIPTION	PART NO.	QTY
1	EMBEDMENT PANEL DETECTABLE		
2	WARNING SPACE SYSTEM		
3	24" x 36" TACTILE (ONLINE DOWNLOAD)		
4	PLANS AND DETAILS		

SCALE: AS NOTED FULL SIZE

DATE	BY	REVISION

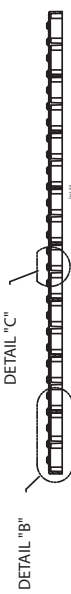
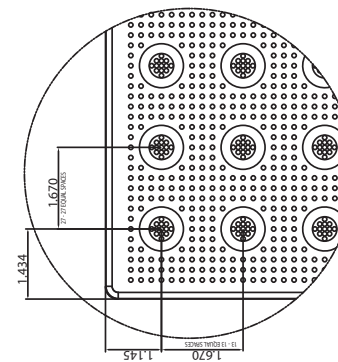
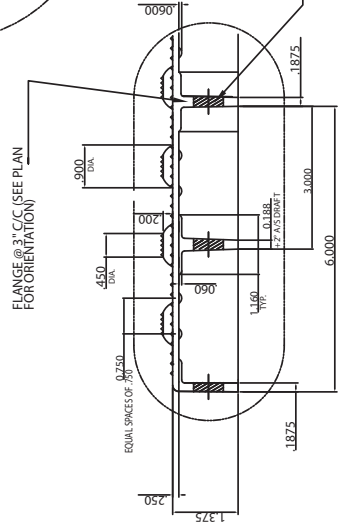
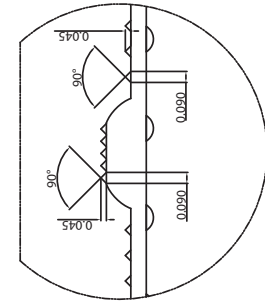
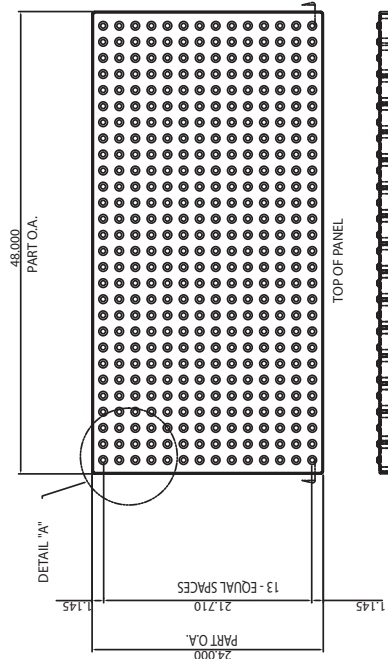
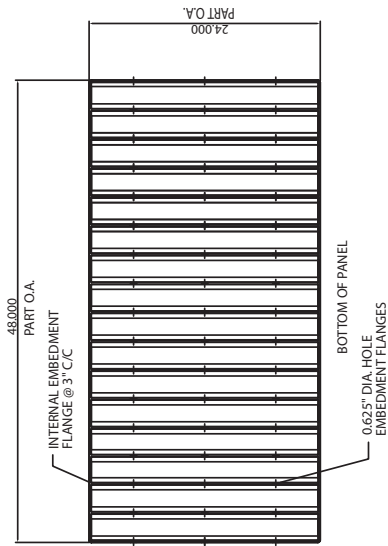
GENERAL NOTES:
 1. EMBEDMENT PANEL DETECTABLE
 2. WARNING SPACE SYSTEM
 3. 24" x 36" TACTILE (ONLINE DOWNLOAD)
 4. PLANS AND DETAILS

DATE: 01/15/2020
 DRAWN BY: J. B. BROWN
 CHECKED BY: J. B. BROWN
 APPROVED BY: J. B. BROWN

ADA SOLUTIONS, INC.
 P.O. Box 3
 N.Billerica, Ma. 01862

CAST-IN-PLACE TACTILE

24"x48"
1.67" Dome Spacing

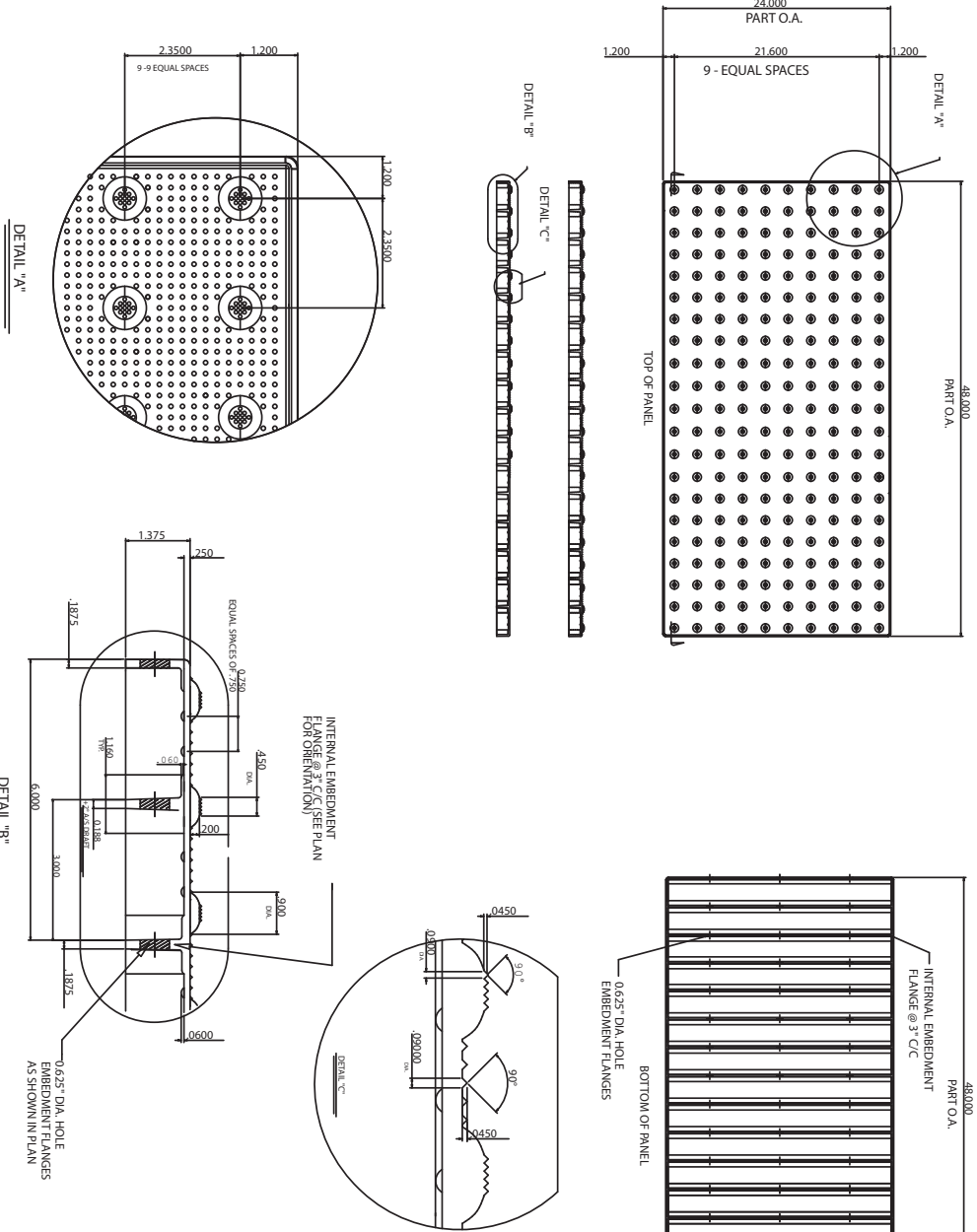


WWW.ADATILE.COM

MATERIAL LIST		PART NO.	QTY
1	DESCRIPTION		
2			
3			
4			
SLICE		AS NOTED	FULL SIZE
TRAFFIC	INTERNAL	PART NO.	DESCRIPTION
EXTERNAL	INTERNAL		
PROJECT			
EMBEDMENT PANEL DETECTABLE			
EMBEDMENT FLANGES			
24" x 48" SQUARE TACTILE			
CURB RAMP TILE (INLINE DOME)			
PLANS AND DETAILS			
DRAWING NO.		REVISED	
ADA SOLUTIONS, INC.			
P.O. Box 3			
N.Billerica, Ma. 01862			

CAST-IN-PLACE TACTILE

24"x48" Tile
2.35" Dome Spacing



WWW.ADATILE.COM

ITEM	DESCRIPTION	PART NO.	QTY
1			
2			
3			
4			

ITEM	DESCRIPTION	PART NO.	QTY
1			
2			
3			
4			

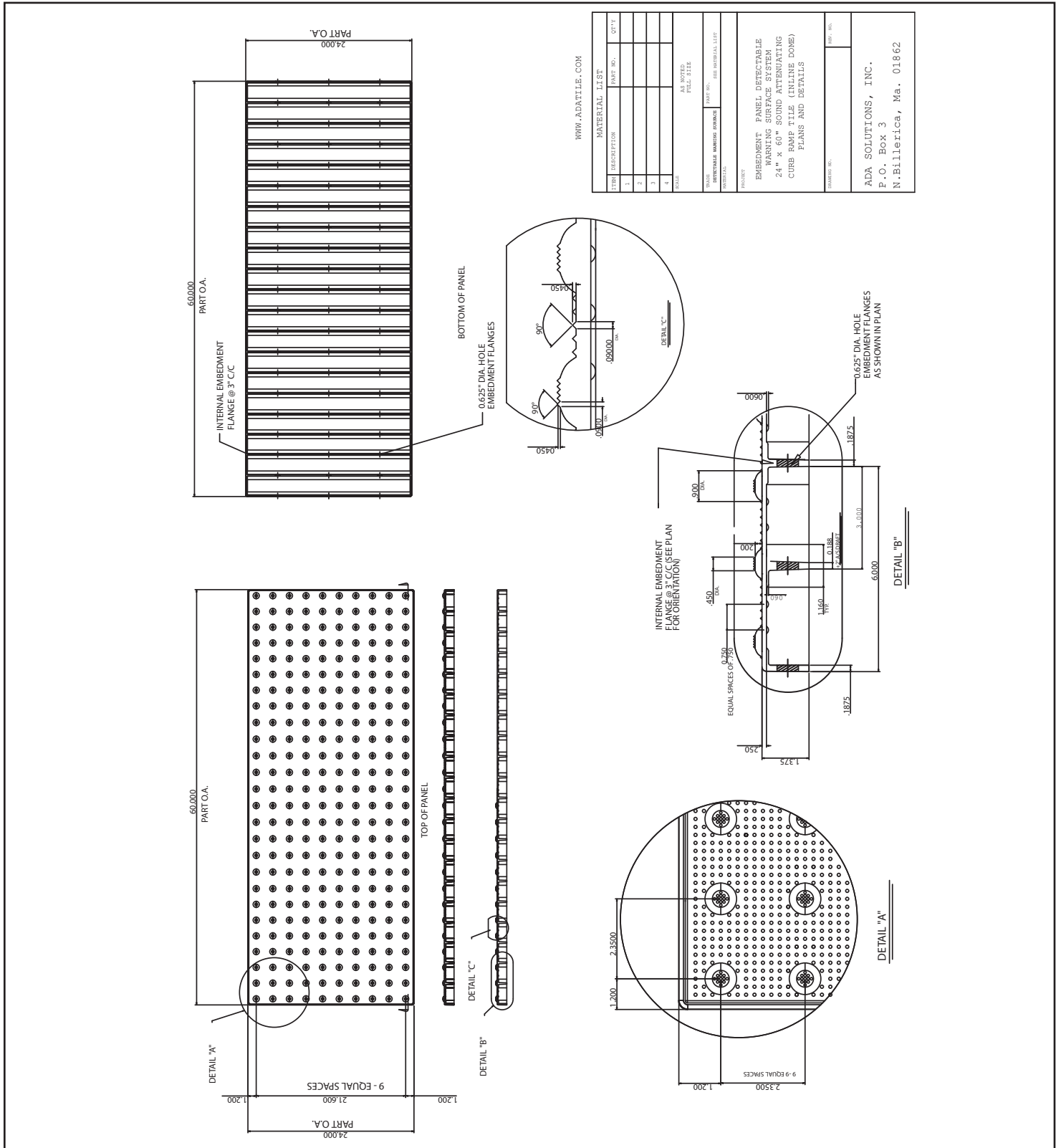
ITEM	DESCRIPTION	PART NO.	QTY
1			
2			
3			
4			

ITEM	DESCRIPTION	PART NO.	QTY
1			
2			
3			
4			

ADA SOLUTIONS, INC.
P.O. Box 3
N.Billerica, Ma. 01862

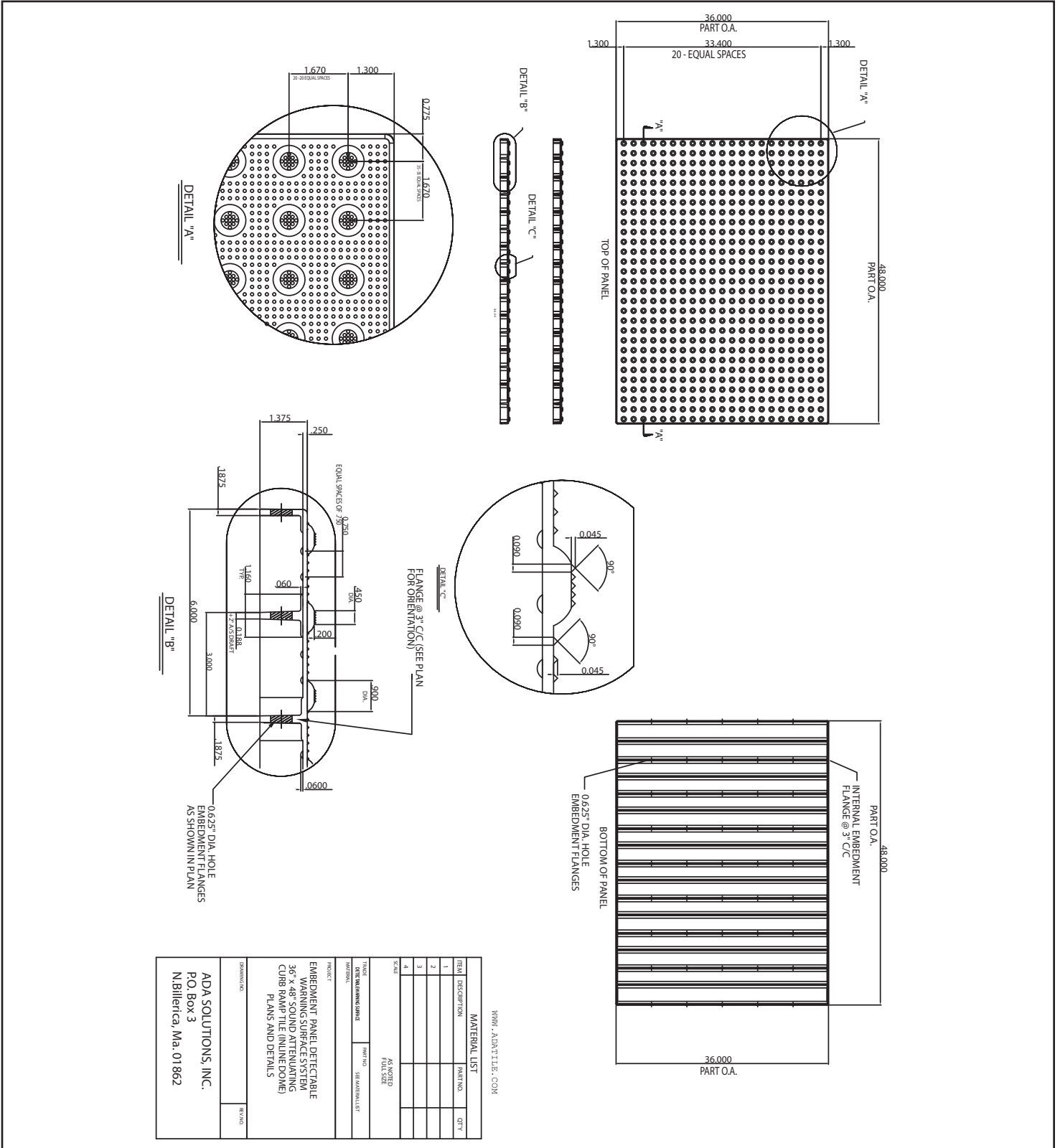
CAST-IN-PLACE TACTILE

24"x60" Tile
2.35" Dome Spacing



CAST-IN-PLACE TACTILE

36" x 48" Tile
1.67" Dome Spacing



WWW.ADATILE.COM

MATERIAL LIST

ITEM	DESCRIPTION	PART NO.	QTY.
1			
2			
3			
4			

SCALE: AS NOTED FULL SIZE

TITLE: CAST-IN-PLACE TACTILE

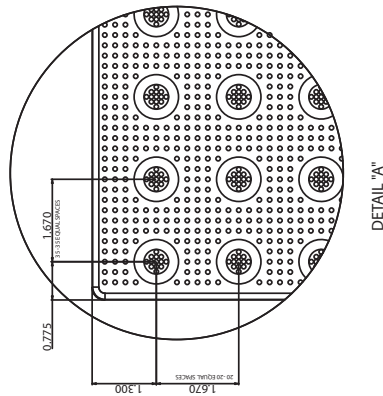
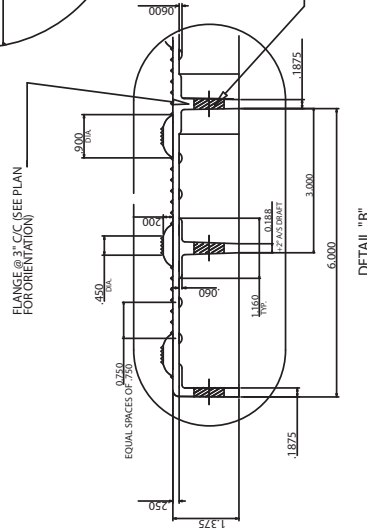
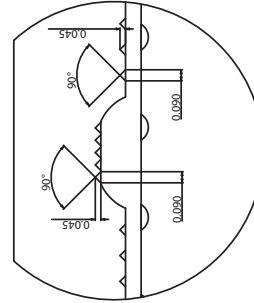
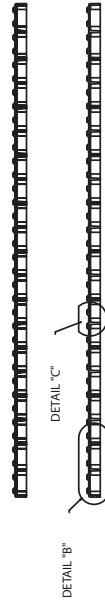
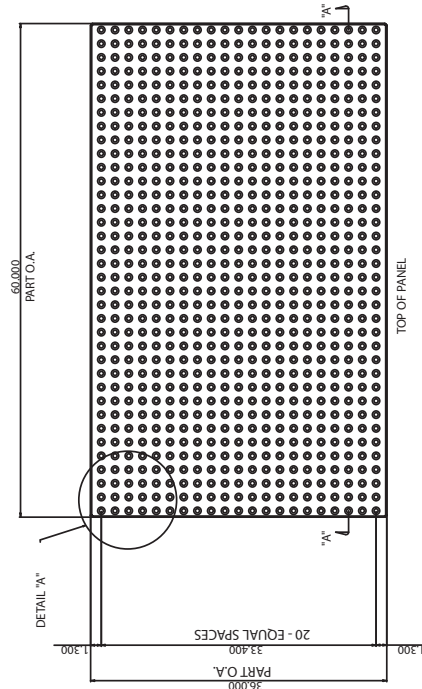
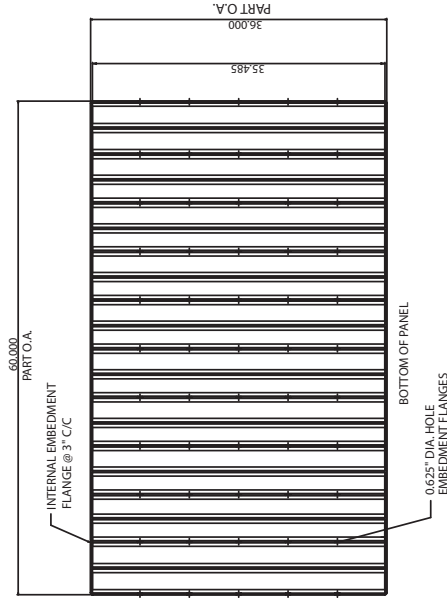
PROJECT: EMBEDMENT PANEL DETECTABLE WARNING SURFACE SYSTEM

36" x 48" SOUND ATTENUATING CURB RAMP TILE (INLINE DOME) PLANS AND DETAILS

ADA SOLUTIONS, INC.
P.O. Box 3
N.Billerica, Ma. 01862

CAST-IN-PLACE TACTILE

36"x60" Tile
1.67" Dome Spacing



WWW.ADATILE.COM

ITEM	DESCRIPTION	MARKING	QTY
1			
2			
3			
4			

SCALE: AS NOTED
 DATE: 04/14/02
 DRAWN BY: [REDACTED]
 CHECKED BY: [REDACTED]
 PROJECT: ADA SOLUTIONS, INC.
 EMBEDMENT PANEL DETECTABLE WARNING SURFACE SYSTEM
 36" X 60" SOUND ATTENUATING CURB RAMP TILE (IN LINE DOME) PLANS AND DETAILS
 REVISIONS: [REDACTED]

ADA SOLUTIONS, INC.
 P.O. Box 3
 Billerica, Ma. 01862



Wherever you go...
There we are™

- **INDUSTRY LEADING SERVICE, DELIVERY AND PRICE**
- **ONE PIECE APPLICATION**
- **TIME-SAVING INSTALLATION**
- **CAST-IN-PLACE REPLACEABLE**
- **RADIUS REPLACEABLE (WET-SET)**
- **RADIUS SURFACE MOUNT**
- **SURFACE MOUNT (RETROFIT)**
- **CAST IN PLACE (WET-SET)**
- **ADAAG COMPLIANT**
- **AVAILABLE STANDARD SIZES**
2'x3' • 2'x4' • 2'x5' • 3'x4' • 3'x5' • 2'x33¼"
- **UNIFORM COLOR THROUGHOUT**

